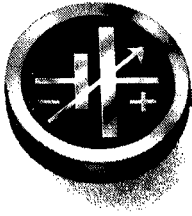


INSTRUCTION MANUAL



KEPCO POWER ASSEMBLY COMPONENTS

RA 43

RACK ADAPTER

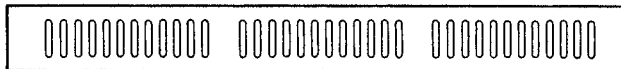
DESCRIPTION (Refer to FIG. 1)

The Kepco Model RA 43 RACK ADAPTER is designed for the installation of Kepco Power Assemblies into a standard 19-inch (482.6 mm) rack. The Rack Adapter occupies 7 inches (177.8 mm) of vertical space in the standard 19-inch equipment rack and is 21-inches (533.4 mm) deep. The Rack Adapter may be supplied with either the vented (Model FFP-A) or the non-vented (Model FFP-B) Filler Panel.

The Rack Adapter may be mounted fixed or may be equipped with optional slides. The unit comes fitted with bracket spacers (shim bars for equipment slides), four rubber feet, a removable cover with twelve mounting screws, Rack Adapter handles and Mounting Ears. Rack Adapter, RA 43 was developed to provide mounting space for a multitude of Kepco's linear and switching power supplies. The Rack Adapter may be equipped with a variety of front panel and rear panel components to form a complete rack mounted power assembly, designed by the user.

Details about all available power supplies, panel components and accessories to be used with RA 43 Rack Adapter may be found in Kepco's Switching Power Supplies Manual, "Power Assemblies" Section, at the end of the manual. It is available from your Kepco Representative, or directly from Kepco, Inc., 131-38 Sanford Avenue, Flushing, N.Y. 11352, USA.

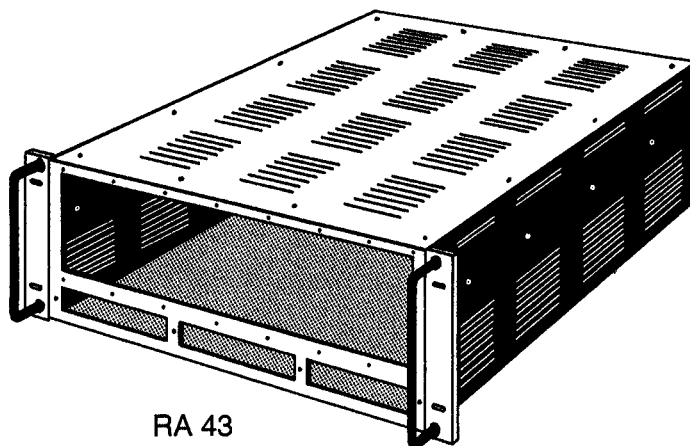
Mechanical dimensions, material and finish of the Kepco Model RA 43 Rack Adapter are provided in Figure 2.



FFP-A

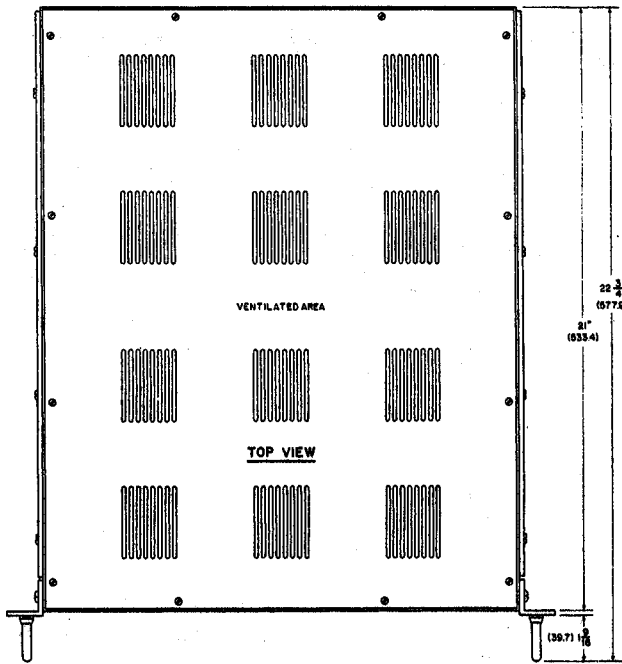


FFP-B



RA 43

FIG. 1 KEPCO MODEL RA 43 RACK ADAPTER AND FILLER PANELS.



NOTES:

1. MATERIAL:
 - A) CHASSIS: .090 THK. ALUM. 6062-H32.
 - B) COVER: 0.83 THK. ALUM. 6062-H32.
 - C) ANGLE BKT.: 0.187 THK. ALUM. 6063-T5.
 - D) BKT., SPACER: 0.187 THK. ALUM. 6063-T5.
2. FINISH:
 - A) BKT. SPACER, CHASSIS & COVER: YELLOW IRIDITE MIL.-C-5541A.
 - B) ANGLE BKT. LIGHT GRAY PER FEDERAL STD. 595, COLOR NO. 26440.
3. RACK OR CABINET MOUNTING: REMOVE (4) PLASTIC FEET.
4. IF INSTALLATION WITHOUT SLIDES IS DESIRED, THE UNIT MUST BE SUPPORTED BY A RIGID PLATFORM.
5. DIMENSIONS IN PARENTHESES ARE IN MILLIMETERS.
6. TOLERANCES:
 - A) BETWEEN MOUNTING HOLES: ± 1/64 (± 0.4).
 - B) ALL OTHER DIMENSIONS: ± 1/32 (± 0.8), EXCEPT AS NOTED.

SLIDE TYPE	USED MOUNTING HOLE			
	A	B	C	D
* 110 QD-22-2	X	X	X	NOT USED
* 110 QD-24-2	X	X	NOT USED	X

* USE SAME SCREWS ALONG WITH BRACKET SPACER TO MOUNT SLIDES.

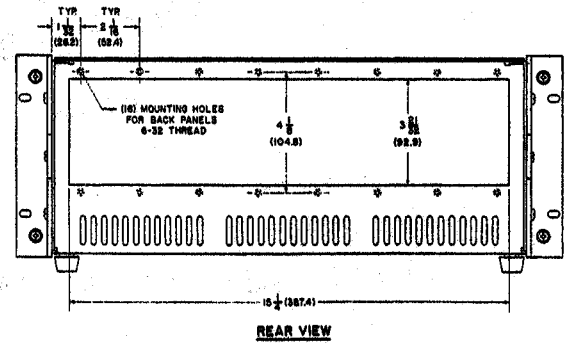
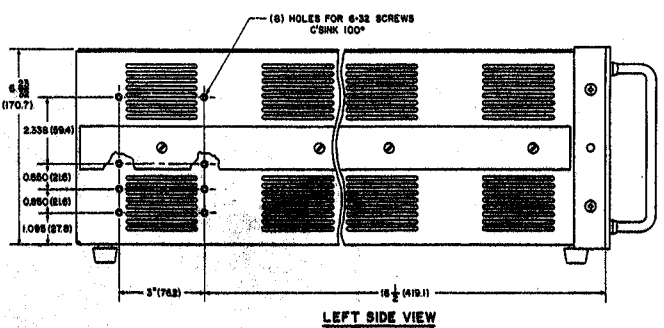
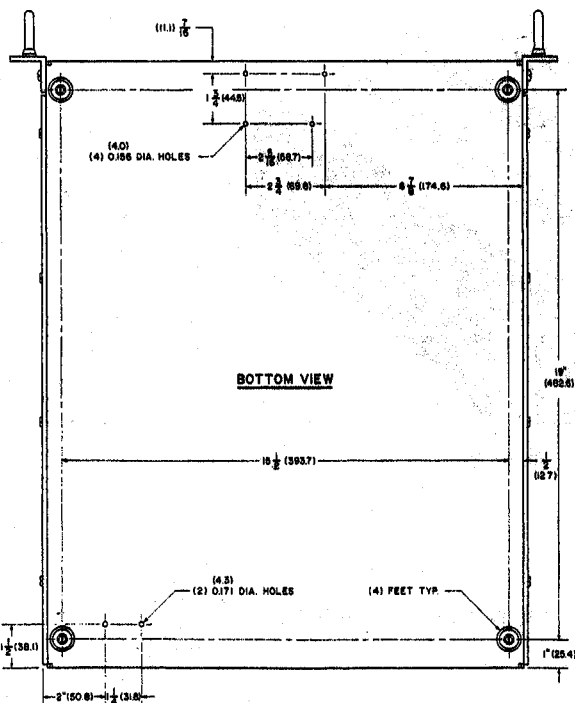
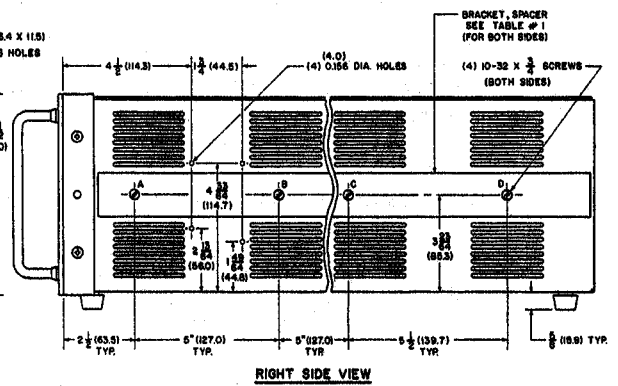
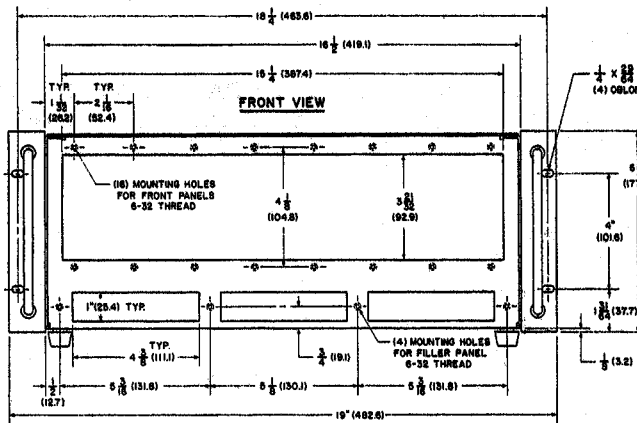


FIG. 2 MECHANICAL OUTLINE DRAWING, KEPKO MODEL RA 43 RACK ADAPTER.