

INSTRUCTION MANUAL

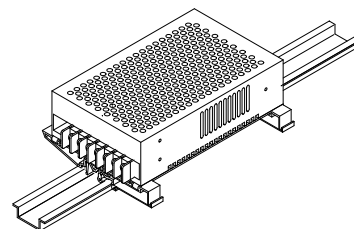


KEPCO An ISO 9001 Company.

**KIT
DIN AK
-75L/100L**

DIN-RAIL MOUNTING KIT FOR SERIES AK-75, AK-100

DESCRIPTION. Kepco KITS, Model DIN AK-75L and DIN AK-100L contain two preassembled mounting clips and associated hardware used to install AK-75 and AK-100 Series power supplies on a DIN rail. The "L" suffix is for mounting horizontally along the long dimension (length) as shown in Figure 1. Outline dimensions are shown in Figure 4.



3043936

FIGURE 1. L SUFFIX ORIENTATION

TABLE 1. COMPONENTS SUPPLIED

KIT MODEL NO.	MOUNTING PLATE (QTY 1) PART NO.	CLIP (QTY 2) PART NO.	SCREW, SEMS (QTY 2) PART NO.	SCREW (QTY 2) PART NO.	WASHER, FLAT (QTY 2) PART NO.	WASHER, LOCK (QTY 2) PART NO.	NUT (QTY 2) PART NO.
DIN AK-75L or DIN AK-100L	128-2443	108-0362	101-0463 (M4 X 8 PHPH)	101-0408 (6-32 X 5/16, FLPO)	103-0028 (NO. 6,)	103-0015 (NO. 6, INT. TOOTH)	102-0004 (6-32 x 1/4, ACF)

INSTALLING KIT. Attach the preassembled mounting clips to the power supply using the hardware supplied (see Figure 3). The clips may be mounted with the release lever on either side to facilitate removal.

INSTALLING POWER SUPPLY ON DIN RAIL. To mount the power supply on the rail insert one end of both clips under one edge of the rail, then snap the other end of the two clips into place (see Figure 2A).

REMOVING POWER SUPPLY FROM DIN RAIL. While grasping the power supply with one hand, use a screwdriver to apply leverage towards the left as shown in Figure 2B to disengage each clip from the rail. Where mounting clips are close together, it may be necessary to apply leverage with two screwdrivers simultaneously.

A — INSTALLATION

B — REMOVAL

3043937

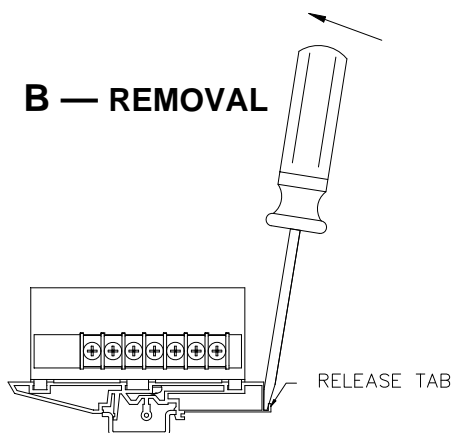
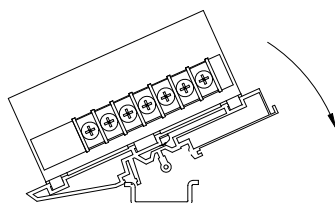
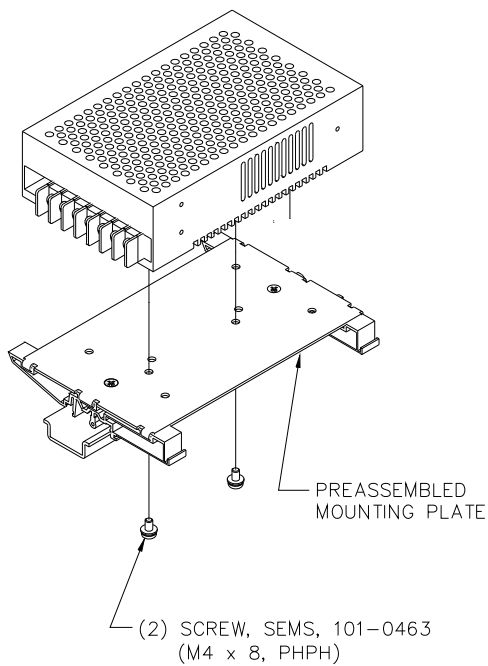


FIGURE 2. INSTALLATION AND REMOVAL OF POWER SUPPLY FROM DIN RAIL

KEPCO, INC. ● 131-38 SANFORD AVENUE ● FLUSHING, NY. 11355 U.S.A. ● TEL (718) 461-7000 ● FAX (718) 767-1102
http://www.kepcopower.com ● email: hq@kepcopower.com



3043938

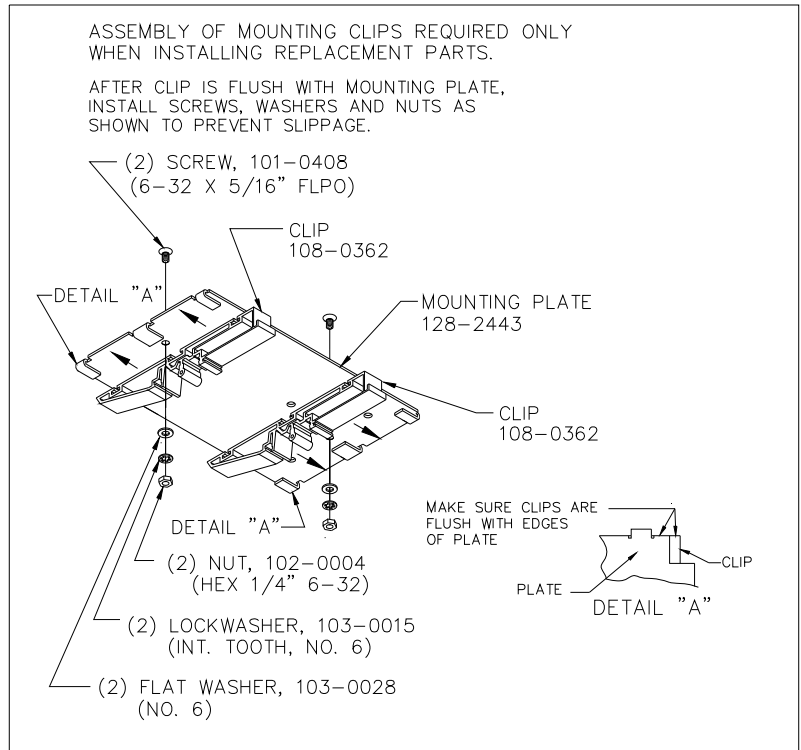
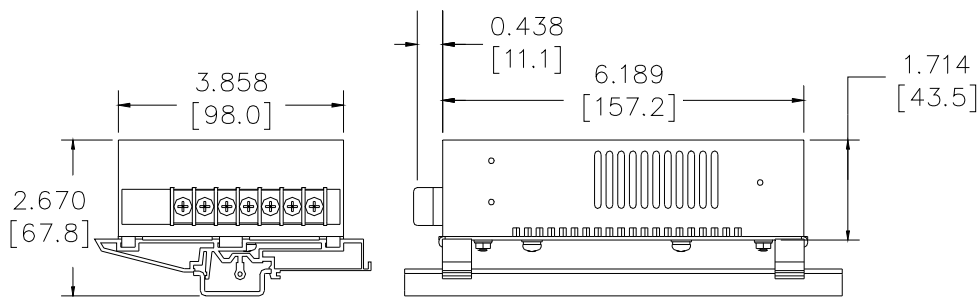


FIGURE 3. INSTALLATION OF KIT ON POWER SUPPLY



3043939

FIGURE 4. POWER SUPPLY WITH KIT INSTALLED, OUTLINE DIMENSIONS