

# INSTRUCTION SHEET



**KEPCO** An ISO 9001 Company.

**KIT  
219-0425**

## DRIVER ASSEMBLY KIT

### 1. DESCRIPTION

This kit provides a replacement pass assembly A3 for the Model ATE 325-0.6M power supply, two resistors for the chassis and three components for modification of PCB Assembly A1 required to accommodate the new pass assembly. This manual provides detailed instructions for removal of the existing A3 assembly, and replacing it with the pass assembly supplied in this kit, and adding and replacing components on the chassis and on PCB Assembly A1, as well as adding wires to the existing harness.

### 2. MATERIAL SUPPLIED (SEE TABLE 1.)

Table 1 lists the contents of this kit and a description of each component.

**TABLE 1. MATERIAL SUPPLIED**

ITEM	DESCRIPTION	KEPCO PART NO.	QUANTITY
Pass Assembly A3	Replaces existing A3 driver assembly	113-0415	1
Resistor, 270 ohm, 2W, 5%	Add component R3 to A1 board	115-0872	1
Capacitor, 1UF 100V, 10%	Add component C32 to A1 board	117-1087	1
Resistor, 20K ohm, 20W, 5%	Add component R206 to chassis	115-0853	1
Resistor, 10 ohm, 1W, 5%	Replace R205	115-0052	1
Shunt	Add component at CR12 location to A1 board	172-0298	1
Cable tie	Secure added wires in harness	138-0076	10
Wires	Add wires to harness #24, 25 (twisted pair with connector on one end, 2 lugs on other end) #44 (lug on each end) #45 (lug on one end, insulation stripped on other end) Jumper (insulation stripped on both ends)	n/a	4
Sleeving	Insulates leads of R205	197-0121	2
Speed Nut, Clip-on 6-32	Attaches R206 to bracket	102-0116	2
Hex Nut, 4-40	Secure R206 to speed nut	102-0003	2
Screw, 4-40, x 0.75, ST FLPO	Secure R206 to speed nut	101-0417	2
Washer, Int. Lock, No. 4	Secure R206 to speed nut	103-0014	2
Instruction Sheet	Contains instructions for installing KIT 219-0425 components	228-1482	1

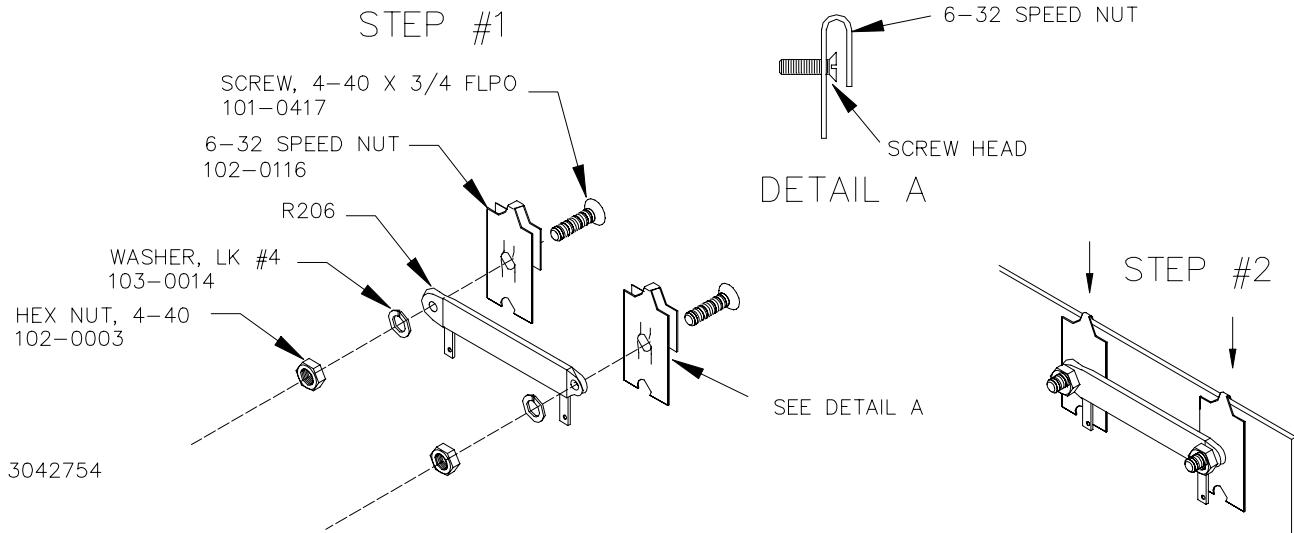
### 3. INSTALLATION

1. Disconnect unit from power source and remove wrap-around cover by removing 5 screws from each side. Be careful not to damage ground strap attached to cover. For convenience the ground strap can be removed from the cover by removing one nut and two washers (save hardware for reassembly).
2. Referring to Figure 1, tag and disconnect connectors J204 and J205 on A3 assembly.
3. Remove terminal strip from pass assembly A3 (with L301 and wire attached) by removing one screw and install on new pass assembly A3 using same screw.

KEPCO, INC. ● 131-38 SANFORD AVENUE ● FLUSHING, NY. 11352 U.S.A. ● TEL (718) 461-7000 ● FAX (718) 767-1102  
<http://www.kepcopower.com> ● email: [hq@kepcopower.com](mailto:hq@kepcopower.com)

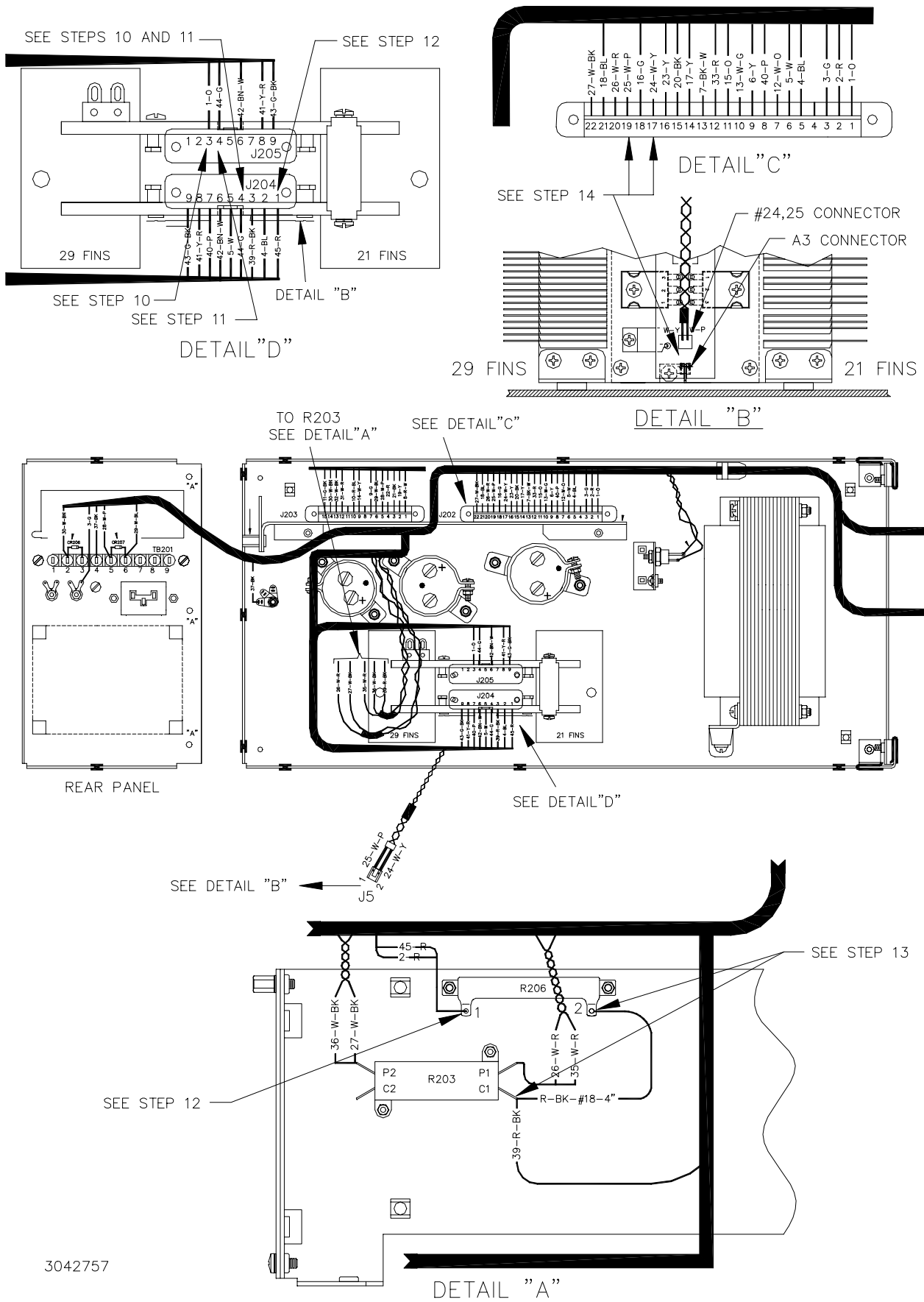


8. At rear panel, remove R205 from terminal block TB201 (see Figure 1). Install sleeving provided over leads of new R205 and install across terminals 4 and 9 of TB201 at rear panel.
9. Referring to Figure 3, step 1, assemble new R206 onto two speed nuts and secure using screws, washers and nuts provided in this kit (see Figure 3). Then press clip-on speed nuts (with R206 assembled) onto the bracket as shown in step 2.



**FIGURE 3. INSTALLATION OF R206**

10. Refer to Figure 4 and disconnect orange wire (1-O) from connector J204 pin 4 and connect to J205 pin 3.
11. Route wire #44 (Green) along harness and connect one end to connector J204 pin 4, and the other end to connector J205 pin 4.
12. Disconnect red wire (2-R) from connector J204 pin 1. Route wire #45 (Red) along harness and connect one end to connector J204 pin 1. Connect the other end, together with red wire previously disconnected from J204 pin 1, to R206 terminal 1.
13. Connect one end of jumper (wire #18) to R206, terminal 2, and the other end to R203, terminal C1.
14. Route wire #24, 25 along harness and plug connector into A3 pass assembly at one end. At the other end connect wire #24 (White-Yellow) to J202 pin 17 and wire #25 (White-Purple) to J202 pin 19.
15. Reattach connectors J201, J202 and J203 on A1 Assembly (see Figure 1), then secure PCB to chassis using four screws previously removed.
16. Reconnect connectors J204 and J205 on A3 assembly.
17. Secure wires to harness using cable ties as needed.
18. If removed, reattach ground strap to cover using nut, flat washer and lockwasher previously removed. Reinstall cover using 10 screws previously removed.



**FIGURE 4. WIRING CHANGES**

KEPCO, INC. ● 131-38 SANFORD AVENUE ● FLUSHING, NY. 11352 U.S.A. ● TEL (718) 461-7000 ● FAX (718) 767-1102  
<http://www.kepcopower.com> ● email: [hq@kepcopower.com](mailto:hq@kepcopower.com)

228-1482 REV 1

052804