

INSTRUCTION MANUAL

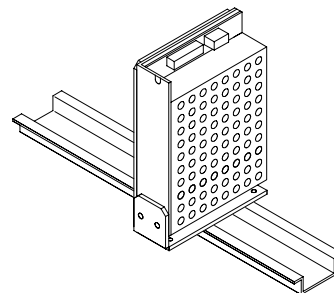


KEPCO An ISO 9001 Company.

**KIT
DIN ERX
-30P**

DIN-RAIL MOUNTING KIT FOR SERIES ERX 30W

DESCRIPTION. Kepco KIT, Model DIN ERX-30P contains a cover, cable kit, left and right mounting clips, and associated hardware (see Table 1) used to install ERX Series 30W power supplies on a DIN rail. The "P" suffix is for mounting the power supply perpendicular to the DIN rail as shown in Figure 1. Outline Dimensions are shown in Figure 5.



3042198

FIGURE 1. P SUFFIX ORIENTATION

TABLE 1. COMPONENTS SUPPLIED

KIT MODEL NO.	COVER PART NO.	CABLE KIT	MOUNTING BRACKET PART NO.	SCREW (QTY 6) (Power Supply To Mounting Bracket) PART NO.	WASHER (QTY 6) (Power Supply To Mounting Bracket) PART NO.	CLIP (QTY 2) PART NO.	CLIP PLATE (QTY 2) PART NO.	SCREW Thread-form (QTY 4) (Clip To Mounting Bracket) PART NO.	WASHER (QTY 4) (Clip To Mounting Bracket) PART NO.
DIN ERX-30P	CA 15	219-0147	128-2054	101-0383 (8-32 X 3/16 PHPH)	103-0017 (NO. 8, INT. TOOTH)	108-0362	128-1938	101-0443 (4-40 X 1/4 ST. TR.)	103-0014 (NO. 4, INT. TOOTH)

INSTALLATION

- INSTALL COVER.** Attach the cover to the power supply per instruction manual supplied with the cover.
- INSTALL MOUNTING BRACKET.** Attach the mounting bracket to the power supply using the hardware supplied (see Figure 2).
- INSTALL CLIPS.** Attach preassembled mounting clips into the mounting bracket holes using hardware supplied (see Figure 3)
- INSTALL CABLE KIT.** Attach wires to the power supply per Instruction Sheet supplied with cable kit.
- INSTALL POWER SUPPLY ON DIN RAIL.** To mount the power supply on the rail insert one end of both mounting clips under one edge of the rail, then snap the other end of the two clips into place (see Figure 4A)

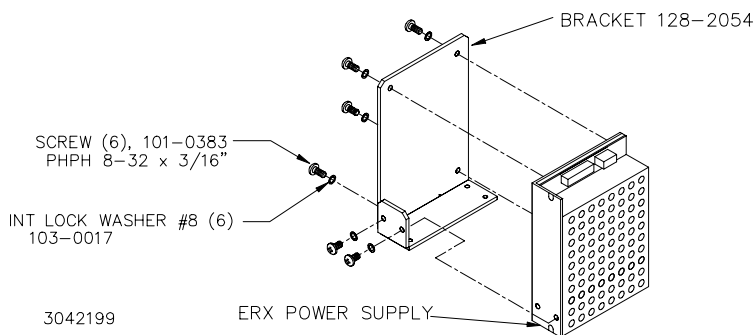
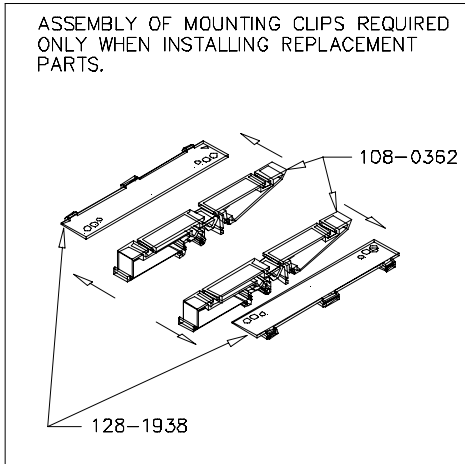


FIGURE 2. INSTALLING MOUNTING BRACKET ON POWER SUPPLY

REMOVING POWER SUPPLY FROM DIN RAIL. While grasping the power supply with one hand, Insert a screwdriver into the access holes provided and apply leverage towards the left as shown in Figure 4B to disengage each clip from the rail. Where mounting clips are close together, it may be necessary to apply leverage with two screwdrivers simultaneously.



3042200

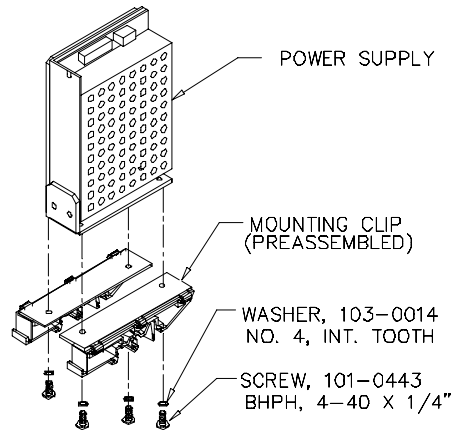
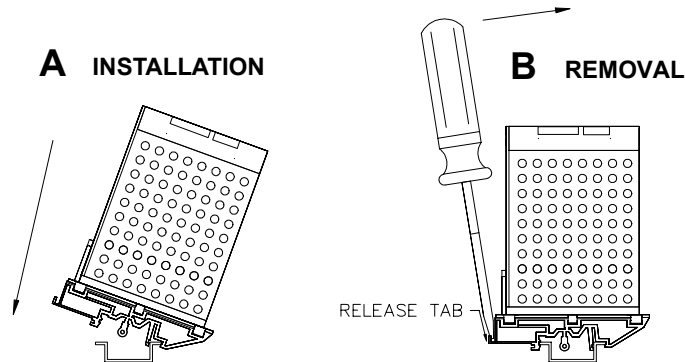
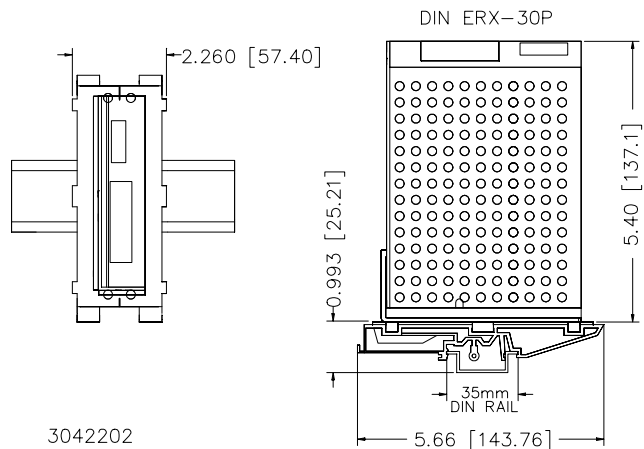


FIGURE 3. INSTALLING CLIPS ON MOUNTING BRACKET



3042201

FIGURE 4. INSTALLATION AND REMOVAL OF POWER SUPPLY FROM DIN RAIL



3042202

FIGURE 5. ERX 30W POWER SUPPLY WITH KIT INSTALLED, OUTLINE DIMENSIONS