

INSTRUCTION MANUAL



KEPCO An ISO 9001 Company.

**KIT
DIN KRW-L**

DIN-RAIL MOUNTING KIT FOR SERIES KRW-L

DESCRIPTION. Kepco Kit, Model DIN KRW-L, contains a preassembled mounting frame, a cover, a cable kit and associated hardware (see Table 1) used to install KRW Series power supplies on a DIN rail. The "L" suffix is for mounting along the long dimension (length) as shown in Figure 1. Outline dimensions are shown in Figure 4.

INSTALLING KIT. Install the power supply in the preassembled mounting frame using the hardware supplied (see Figure 3). Then engage the tabs (A) of the cover in the corresponding slots and slide the cover as shown in Figure 3 until the power supply mounting holes (B) are aligned with corresponding holes in the cover. Secure the cover to the mounting frame using the hardware supplied. Attach wires to the power supply per Instruction Sheet supplied with cable kit.

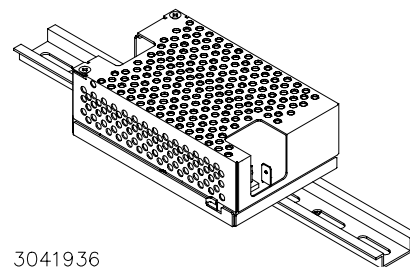


FIGURE 1. L SUFFIX ORIENTATION

TABLE 1. COMPONENTS SUPPLIED

COVER PART NO.	CABLE KIT PART NO.	SCREW (QTY 8) (Power Supply and Clips To Mounting Frame) PART NO.	WASHER (QTY 8) (Power Supply and Clips To Mounting Frame) PART NO.	CLIP (QTY 2) PART NO.	CLIP PLATE (QTY 2) PART NO.	SCREW (QTY 2) (Cover To Mounting Frame) PART NO.
CA 29	219-0242	501-0017 (M3 X 6, PHPH)	103-0014 (NO. 4, INT. TOOTH)	108-0366	128-1996	101-0443 (4-40 X 1/4 BHPH)

INSTALLING POWER SUPPLY ON DIN RAIL. To mount the power supply on the rail insert one end of the clip under one edge of the rail, then snap the other end of the clip into place (see Figure 2A).

REMOVING POWER SUPPLY FROM DIN RAIL. While grasping the power supply with one hand, use a screwdriver to apply leverage towards the left as shown in Figure 2B to disengage the clip from the rail.

A - INSTALLATION

B - REMOVAL

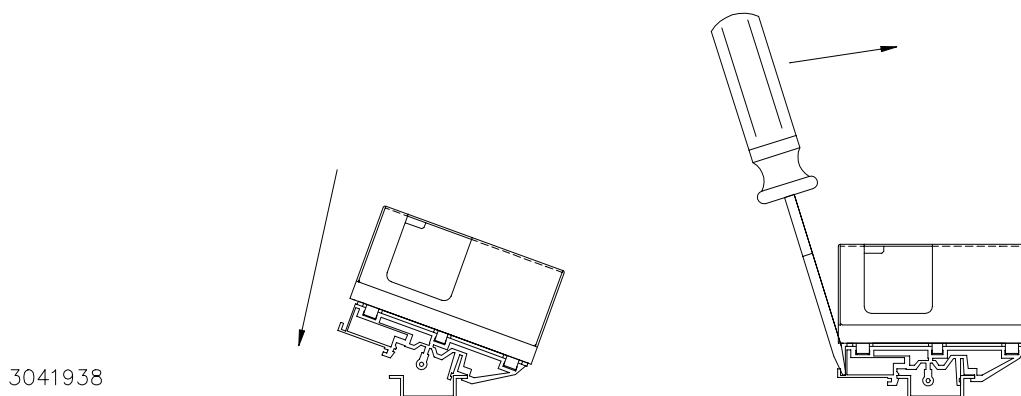
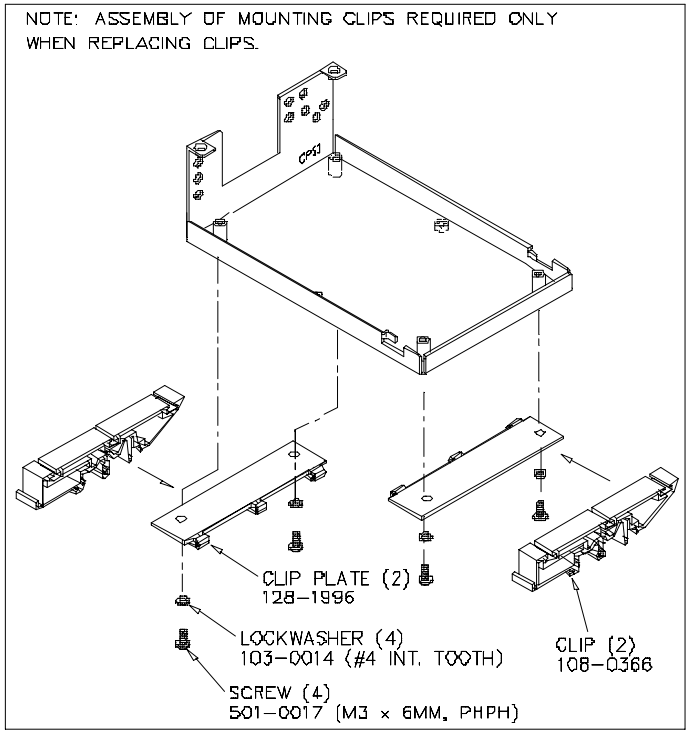


FIGURE 2. INSTALLATION AND REMOVAL OF POWER SUPPLY FROM DIN RAIL

KEPCO, INC. ● 131-38 SANFORD AVENUE ● FLUSHING, NY. 11352 U.S.A. ● TEL (718) 461-7000 ● FAX (718) 767-1102
<http://www.kepcopower.com> ● email: hq@kepcopower.com



3041937

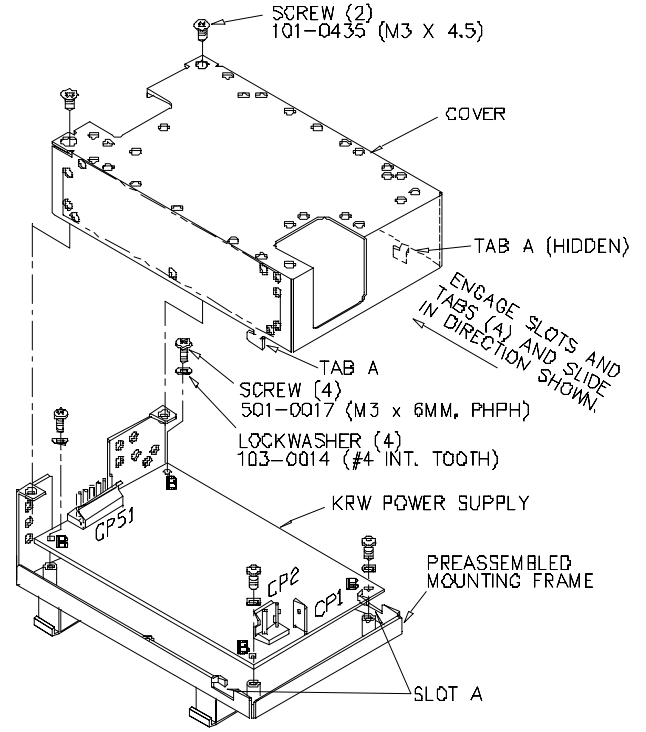
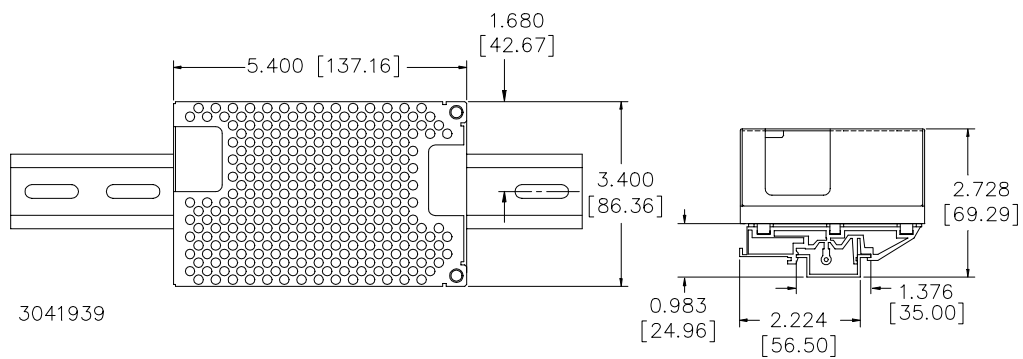


FIGURE 3. INSTALLATION OF KIT ON KRW POWER SUPPLY



3041939

FIGURE 4. KRW POWER SUPPLY WITH KIT INSTALLED, OUTLINE DIMENSIONS