

INSTRUCTION MANUAL

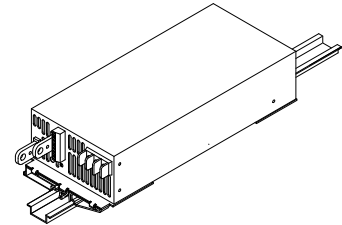


KEPCO An ISO 9001 Company.

**KIT
DIN AE/AK
-1500L**

DIN-RAIL MOUNTING KIT FOR SERIES AE/AK-1500W

DESCRIPTION. Kepco KITS, Model DIN AE-1500L and DIN AK-1500L contain two mounting clips preassembled to a mounting plate and associated hardware used to install AE-1500 Series or AK-1500 Series power supplies, respectively, on a DIN rail. The -1500 suffix is for the 1500 Watt Series. The "L" suffix is for mounting horizontally along the long dimension (length) as shown in Figure 1. Outline dimensions are shown in Figure 4.



3043971

FIGURE 1. L SUFFIX ORIENTATION

TABLE 1. COMPONENTS SUPPLIED

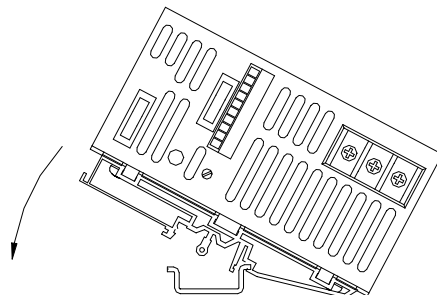
KIT MODEL NO.	MOUNTING PLATE (QTY 2) PART NO.	CLIP (QTY 2) PART NO.	SCREW, SEMS (QTY 4) PART NO.	SCREW (QTY 2) PART NO.	WASHER, FLAT (QTY 2) PART NO.	WASHER, LOCK (QTY 2) PART NO.	NUT (QTY 2) PART NO.
DIN AE-1500L DIN AK-1500L	128-2441	108-0362	101-0463 (M4 X 8 PHPH)	101-0408 (6-32 X 5/16, FLPO)	103-0028 (NO. 6,)	103-0015 (NO. 6, INT. TOOTH)	102-0004 (6-32 x 1/4, ACF)

INSTALLING KIT. Attach the two preassembled mounting plate with clips to the power supply using the hardware supplied (see Figure 3).

INSTALLING POWER SUPPLY ON DIN RAIL. To mount the power supply on the rail insert one end of both clips under one edge of the rail, then snap the other end of the two clips into place (see Figure 2A).

REMOVING POWER SUPPLY FROM DIN RAIL. While grasping the power supply with one hand, use a screwdriver to apply leverage towards the right as shown in Figure 2B to disengage each clip from the rail. Where mounting clips are close together, it may be necessary to apply leverage with two screwdrivers simultaneously.

A — INSTALLATION



3043972

B — REMOVAL

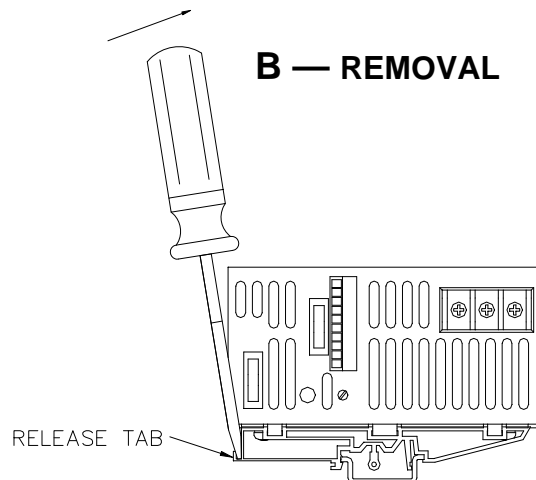


FIGURE 2. INSTALLATION AND REMOVAL OF POWER SUPPLY FROM DIN RAIL

KEPCO, INC. ● 131-38 SANFORD AVENUE ● FLUSHING, NY. 11355 U.S.A. ● TEL (718) 461-7000 ● FAX (718) 767-1102
http://www.kepcopower.com ● email: hq@kepcopower.com

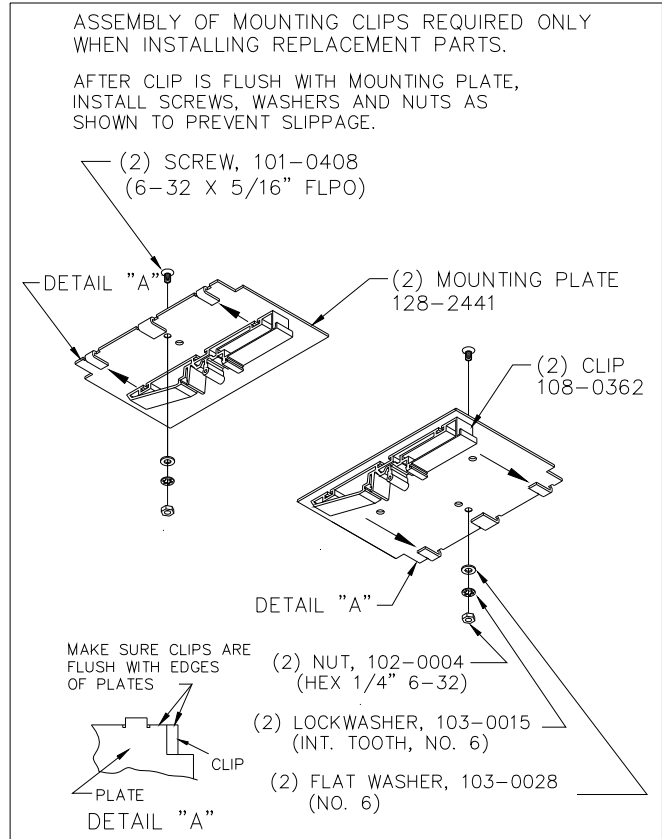
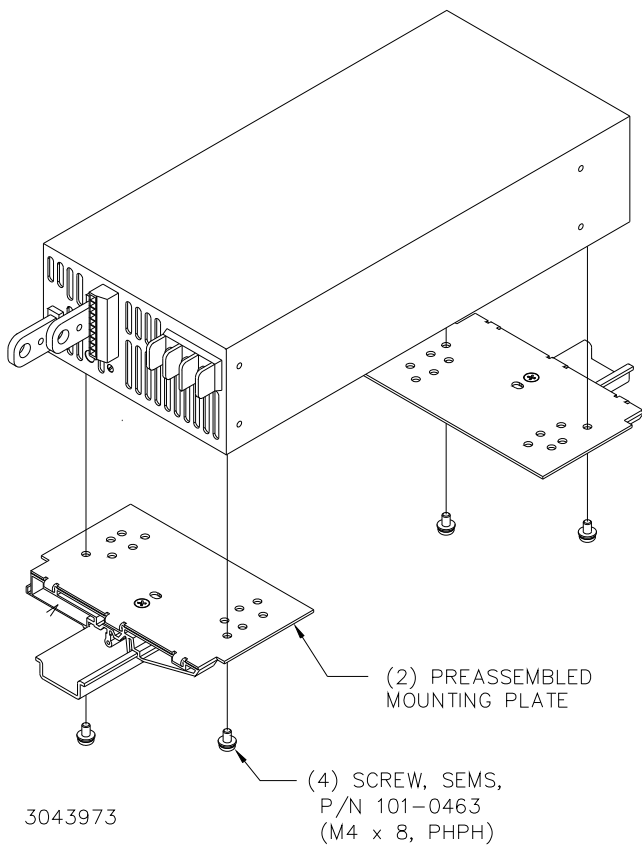


FIGURE 3. INSTALLATION OF KIT ON POWER SUPPLY

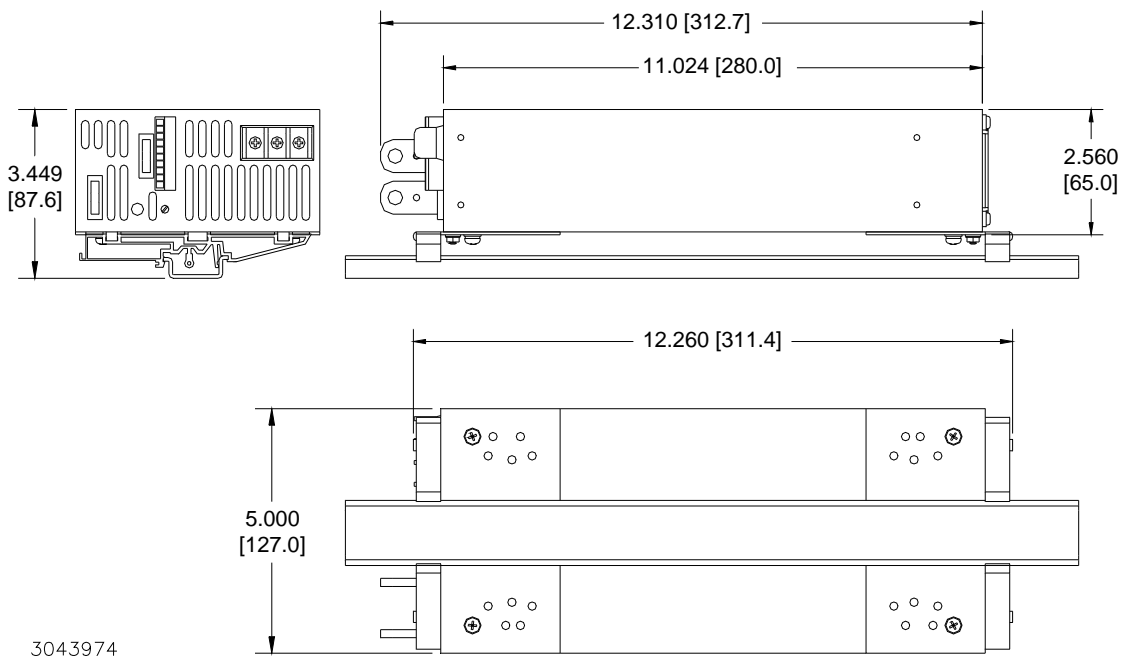


FIGURE 4. POWER SUPPLY WITH KIT INSTALLED, OUTLINE DIMENSIONS